



955 MILLWOOD RD, UNIT #420



Bright and spacious 1,238 sq.ft. unit featuring 2 bedrooms, 2 bathrooms and a large balcony with quiet south views.

Excellent well-managed building in the heart of Leaside. Daily activities and recreation available inside the building, including afternoon tea, knitting, line dancing, shuffle board, movie nights, and bingo! Perfectly located just steps to Leaside Memorial Community Gardens, Lower Don Parklands, East York Town Centre, library, grocery, shops, restaurants and so much more!

PROUDLY PRESENTED BY:

Oulahen TEAM

📞 416. 222.1212 🌐 oulahen.com

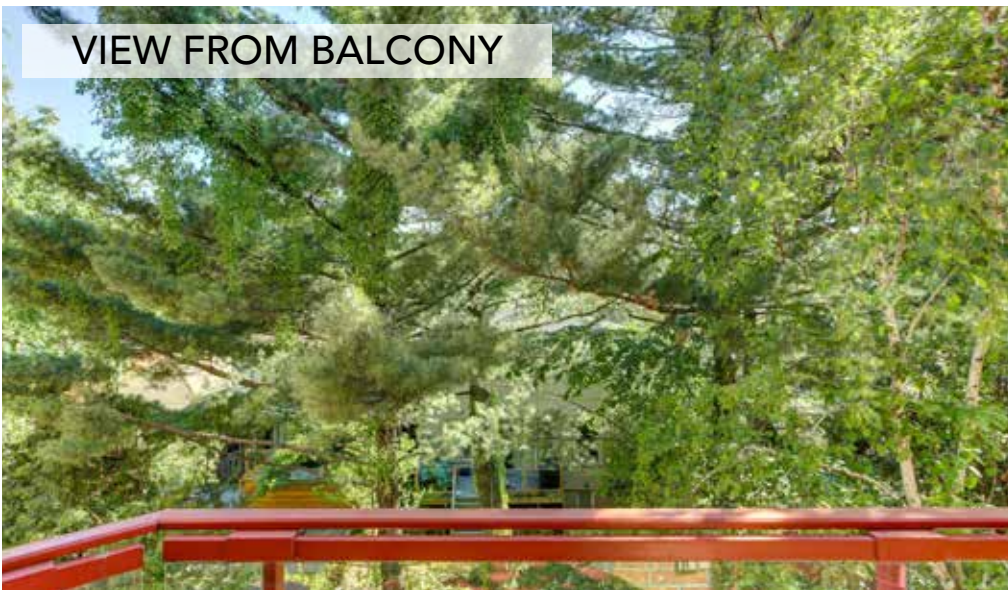


BEDROOMS 2
BATHROOMS 2 (1x4 piece, 1x3 piece)
INCLUSIONS Fridge (2016), Stove, Dishwasher. Washer and Dryer (2017). All Electric Light Fixtures. All Window Coverings. All Broadloom Where Laid. One (1) Parking Space. Exclusive Locker On P1.
PARKING Level A, Unit 31
LOCKER Level A, Unit 3
POSSESSION Immediate
TAXES (2017) \$2,850.04
MAINTENANCE \$770.66/Month
(Includes Hydro, Heat, Water, Building Insurance, Central Air Conditioning, Common Elements, and Parking)
PRICE \$749,900





VIEW FROM BALCONY



Public Schools

- › Rolph Road E.S.
 - › JK-06
- › Bessborough Drive E. & M.S.
 - › JK-08
- › Leaside H.S.
 - › 09-12

Catholic Schools

- › St. Anselm
 - › JK-08
- › Senator O'Connor
 - › 09-12

FOR MORE INFORMATION PLEASE **CONTACT THE OULAHEN TEAM TODAY!**

Oulahen TEAM **RE/MAX** RE/MAX REALTRON REALTY INC. Brokerage, Independently Owned and Operated

4685 YONGE STREET, SUITE 200, TORONTO, ONTARIO M2N 5M3

Paul Oulahen
REAL ESTATE BROKER
416.520.1212

Jeff Oulahen
SALES REPRESENTATIVE
647.222.1212

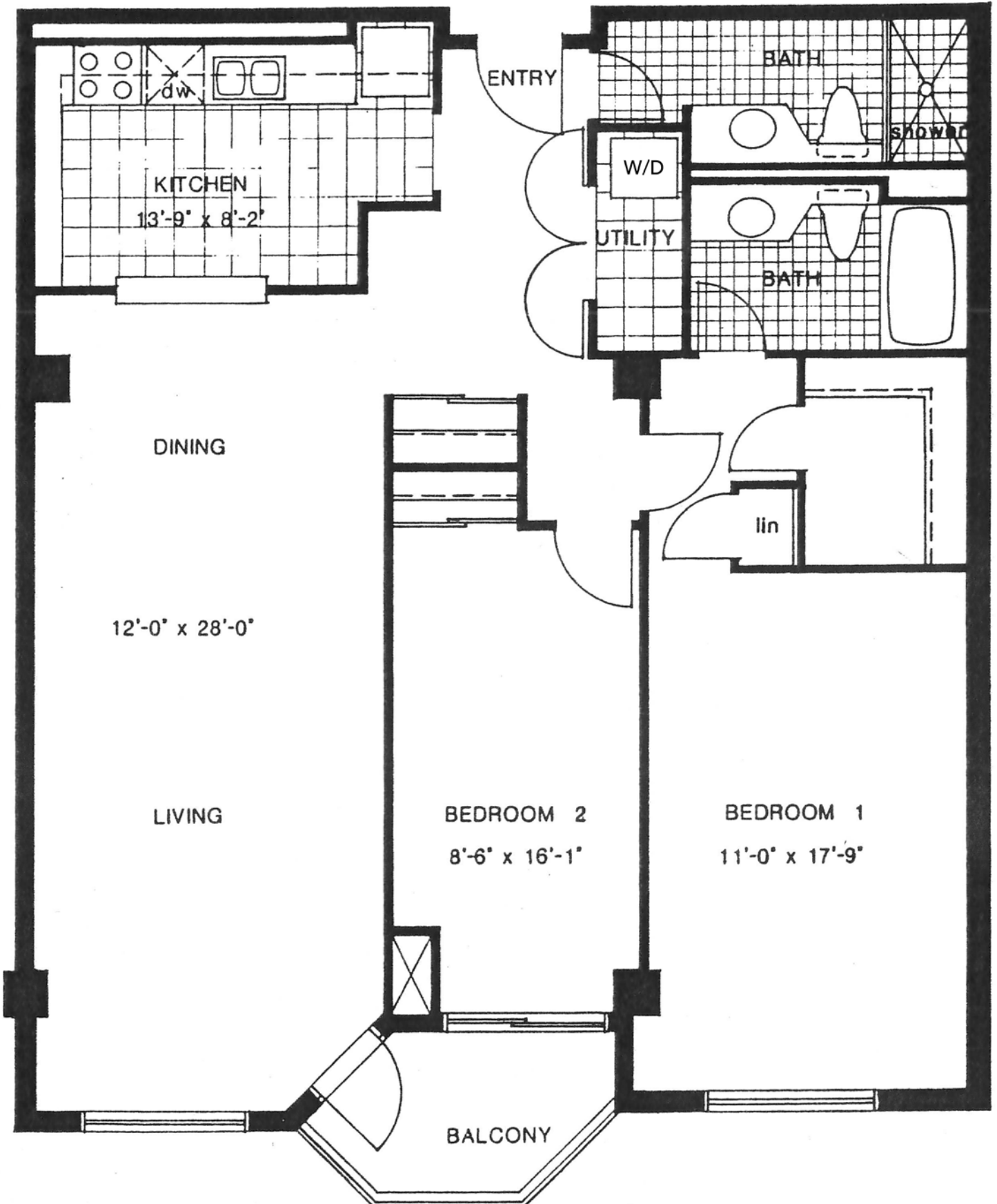
Mark Oulahen
SALES REPRESENTATIVE
905.222.1212

Norah Oulahen
SALES REPRESENTATIVE
647.225.1212

416.222.1212 / oulahen.com

NOT INTENDED TO SOLICIT CURRENT AGENCY RELATIONSHIPS. ALL INFORMATION AND STATEMENTS CONTAINED HEREIN, PROVIDED BY RE/MAX REALTRON REALTY INC. REGARDING PROPERTY FOR SALE, IS FROM SOURCES DEEMED RELIABLE AND ASSUMED CORRECT, BUT NO WARRANTY OR REPRESENTATION IS MADE AS TO THE ACCURACY THEREOF AND SAME AS SUBMITTED SUBJECT TO ERRORS, OMISSIONS, CHANGE OF PRICE, OR OTHER CONDITIONS, PRIOR SALE OR WITHDRAWAL WITHOUT NOTICE.

FLOOR PLAN



AMENITIES

- › Ample Visitor Parking
- › Games Room
- › Exercise Room
- › Conservatory

- › Meeting Room
- › Library
- › Workshop
- › Botanical Room

- › Indoor Swimming Pool
- › Sauna
- › Daily Activities
(Bridge, Knitting, Afternoon Tea, Line Dancing, Shuffle Board, and more!)



Exercise Room



Conservatory



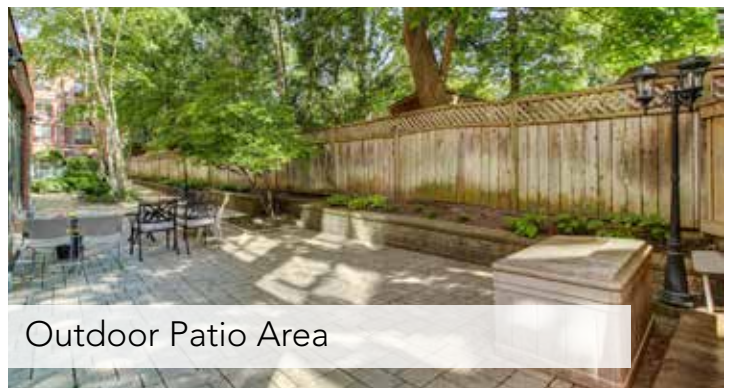
Meeting Room



Library



Workshop



Outdoor Patio Area

