

PROUDLY PRESENTED BY

Oulahen TEAM
REALTY INC. BROKERAGE



15 BASEBALL PLACE

SUITE 516

STEP INTO YOUR
DREAM HOME IN
THE COMMUNITY
OF SOUTH
RIVERDALE

Modern and stylish 2 bed, 2 bath condo in the heart of Toronto. This home features an open-concept living and dining area and 11 ft ceiling. Modern kitchen with stainless steel appliances. Primary bedroom with 3-piece ensuite bath and double closet Excellent building amenities including an outdoor rooftop infinity pool, rooftop terrace, gym, games room, party room, yoga studio, and more. Easy access to Queen TTC streetcar, Don Valley Parkway, and Gardiner Expressway. Just steps to shops, restaurants, parks, schools, and so much more.



DETAILS

LISTING PRICE: \$624,900

SQUARE FOOTAGE: 675 SQ.FT.

TAXES (2024): \$2,317.54

MAINTENANCE FEES: \$484.38/MONTH
(HEAT, WATER, COMMON ELEMENT, BUILDING INSURANCE)

BEDROOMS: 2

BATHROOMS: 2 (1X4PC, 1X3PC)

INCLUSIONS

- Fridge
- Stove
- Range Hood
- Dishwasher
- Washer
- Dryer
- All Window Coverings
- All Electrical Light Fixtures

PUBLIC SCHOOLS

- Dundas Junior Public School (JK-GR 05)
- Queen Alexandra Middle School (GR 07-08)
- Riverdale Colligate Institute (GR 09-12)

CATHOLIC SCHOOLS

- Holy Name Catholic School (JK-GR 08)
- St. Patrick Catholic Secondary School (GR 09-12)

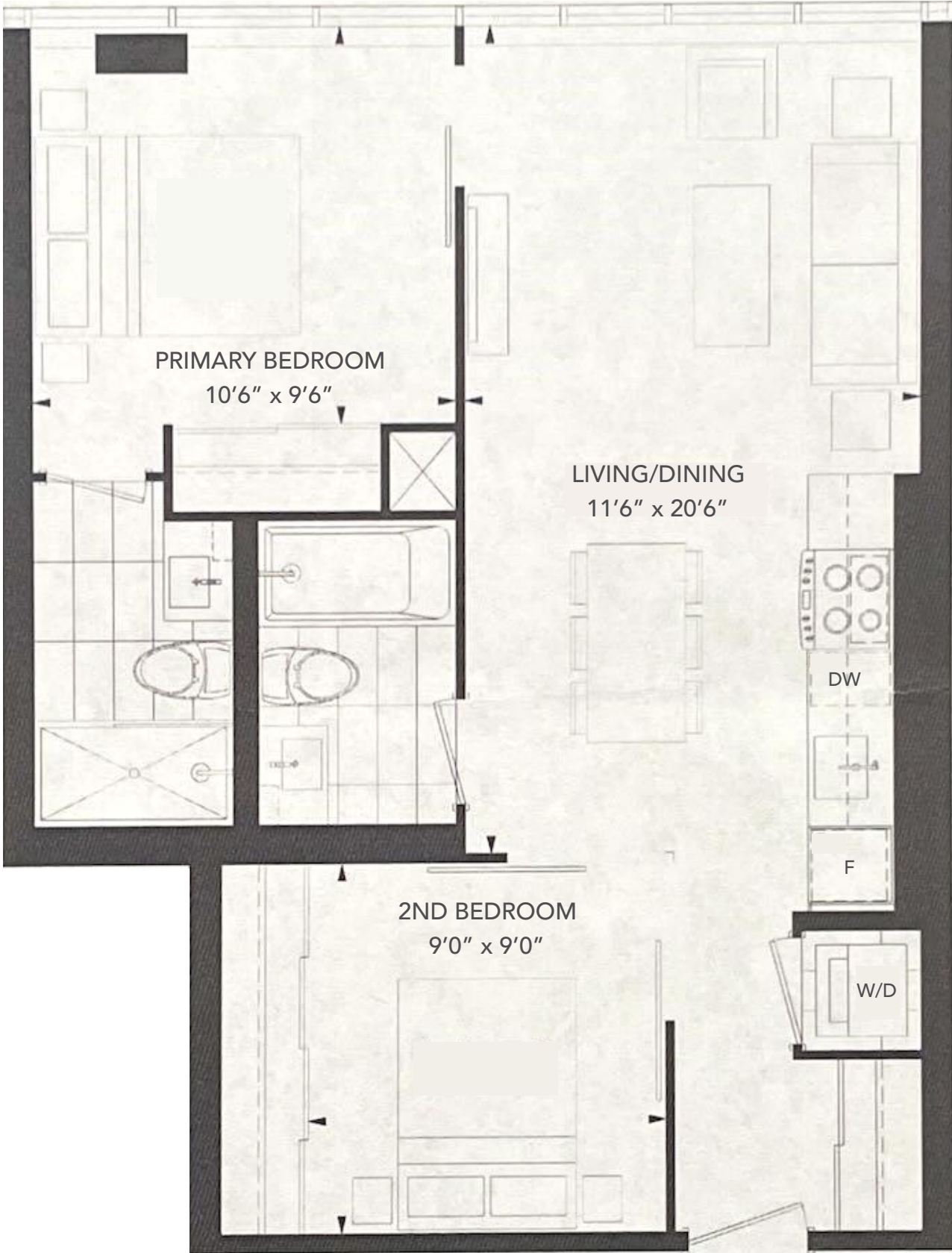








FLOOR PLAN



CLOSE TO

- Don Valley Parkway
- Don Mount Court
- Downtown Bars
- Shopping
- Joel Weeks Park
- Restaurants
- Coffee Bars
- TTC



Oulahen TEAM
REALTY INC. BROKERAGE

4685 YONGE STREET, SUITE 200
TORONTO, ONTARIO, M2N 5M3
416.222.1212 / OULAHEN.COM

NOT INTENDED TO SOLICIT CURRENT AGENCY RELATIONSHIPS. ALL INFORMATION AND STATEMENTS CONTAINED HEREIN, PROVIDED BY OULAHEN TEAM REALTY INC. REGARDING PROPERTY FOR SALE, IS FROM SOURCES DEEMED RELIABLE AND ASSUMED CORRECT, BUT NO WARRANTY OR REPRESENTATION IS MADE AS TO THE ACCURACY THEREOF AND SAME AS SUBMITTED SUBJECT TO ERRORS, OMISSIONS, CHANGE OF PRICE, OR OTHER CONDITIONS, PRIOR SALE OR WITHDRAWAL WITHOUT NOTICE.